

PROFINET-Connector, RJ45, 90°, 6502833

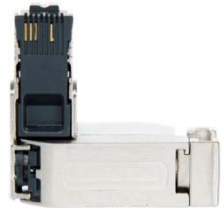
17.10.2024

Intended Use

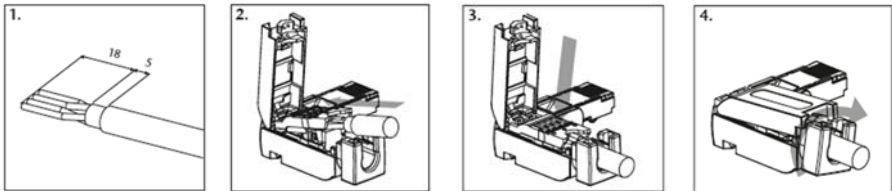
The field-assembled RJ45 connector for PROFINET, Modbus, and EtherCAT is easy and quick to install. With a PROFINET cable of up to 100 m length, Ethernet components such as a PROFINET station can be connected. In addition, the RJ45 connectors are designed in protection class IP20 and for transmission rates up to 100 Mbps.

Features

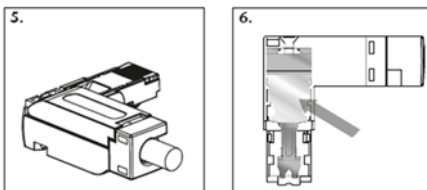
- Color-coded contact elements help to avoid connection errors
- Transmission rates up to 100 Mbps
- No loose individual parts
- Tool-free installation
- RJ45 connection (IDC) for industrial applications
- For PROFINET, Modbus, and EtherCAT
- 90° cable outlet



Assembly instructions



1.	Lay out the stripped wires in accordance with the color coding of the RJ45 connector
2.	Insert the wires into the contacts of the RJ45 connector as far as the limit stop
3.	Press down on the contacts up to the limit stop to complete the connection
4.	Close the housing cover and turn the sealing piece in the direction of the arrow. For a better lever for proper sealing of the plug, insert a small screwdriver into the hole of the sealing piece



5.	The connector is correctly locked when the screw cap is securely tightened
6.	Release: Completely insert plug and mechanically relieve. Then push the release spring down at the marked position



Attention: If the device is used in a manner not specified by the manufacturer, the protection provided by the device may be affected. Pay special attention to the correct contact during cable installation and when plugging in and unplugging the plug. If you have problems, always read the latest documentation first, which can be found on the Internet at www.tkd-kabel.de. Connected circuits shall meet the requirements of Limited energy circuits acc. UL61010-1

Technical data

Order no.	6502833
Name	PROFINET-Connector, RJ45, 90°
General information	
- Scope of delivery	PROFINET-Connector, manual
- Dimensions (WxDxH)	43,5 x 40,5 x 16,2 mm
- Weight	approx. 35g
PROFINET-Interface	
- Number	1
- Type	Ethernet
- Connection	RJ45 connector
- Transmission rate	Up to 100 Mbit/s
Connector	
- Cable outlet	90°
- Connector type	IDC connection
- Connectible cables	PROFINET cable
- Cable cross section	4 x 24 AWG or 22 AWG
- Outside diameter	6.2 ... 6.7 mm
Ambient conditions	
- Ambient temperature	-30 °C ... +70 °C
- Transport and storage temperature	-40 °C ... +80 °C
- Relative air humidity	95 % r. H. without condensation
- Protection rating	IP20
- Certifications	CE, UL
UL	UL 61010-1 and UL 61010-2-201
- Pollution degree	2
- Ratings	DC 2,8 V / 28 mA
- Use	Dry, indoor use

Note:

The content of this document has been checked by us for compliance with the hardware described. However, as deviations are not excluded, we can not assume any warranty for full compliance, the information in this document is updated regularly. When using the purchased products, please note the latest version of the document, which can be downloaded from the Internet at www.tkd-kabel.de.